

Nanpanjiang Project

Assist Female Engineers Succeed in Compilers and Tools

Ji Qiu

lsqiuji@gmail.com

About me: Ji Qiu



- Founder of Nanpangjiang Project (<https://github.com/hellollvm/nanpanjiang-project/>) (2023-)
- Technical director of PLCT Lab, ISCAS (2019-): Compilers, Runtimes, and Simulators (<https://github.com/plctlab>)
- Chair of HelloLLVM (<https://hellollvm.org/>) (2023-)
- RISC-V ambassador
- 18 years experience in CPU architecture and HW/SW co-design, system software development, maintainer of V8 for RISC-V
- Ph.D. of Computer Architecture

The birth of Nanpangjiang project

- Established in 2023 by the **HelloLLVM*** community in mainland China
- Originated from the first "Women in Compilers and Tools Workshop" (WiCT), initiated by the LLVM Foundation in August 2018
- Dedicated to assisting more female engineers achieve their personal career goals in fundamental software areas such as compilers and virtual machines

* <https://hellollvm.org/>



The Nanpanjiang River originates in my hometown, Yunnan.

It is the source of the Pearl River, the largest river in southern China.

Water is the source of life and strength.

May the Nanpanjiang Project bring more opportunities and courage to women in
compiler technology.

The birth of Nanpangjiang project

- Established in 2023 by the HelloLLVM* community in mainland China
- Originated from the first "**Women in Compilers and Tools Workshop**" (WiCT)* , initiated by the LLVM Foundation in August 2018
- Dedicated to assisting more female engineers achieve their personal career goals in fundamental software areas such as compilers and virtual machines

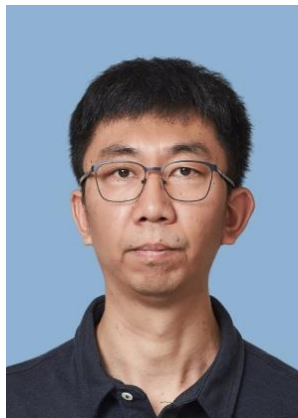
* <https://community-dot-o.llvm.org/wict-meetups/>

The birth of Nanpangjiang project

- Established in 2023 by the HelloLLVM* community in mainland China
- Originated from the first "Women in Compilers and Tools Workshop" (WiCT)* , initiated by the LLVM Foundation in August 2018
- Dedicated to assisting more female engineers **achieve personal career goals** in fundamental software areas such as compilers and virtual machines

<https://github.com/hellollvm/nanpanjiang-project>

12 Long Term Mentors



MingJie Xing
Compiler Principles



Wei Wu
Project Management



Ningning Shi
LLVM/ART/OpenArk



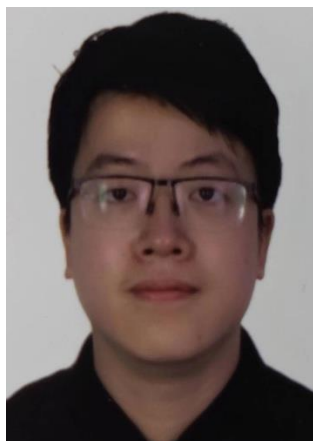
Ji Qiu
CPU/ASIP/VM



Xiaofang Zou
LLVM/GCC/Go/DSA



Chunyu Liao
LLVM/DSP/ISA



Jiawei Chen
GCC/Binutils/ISA



Hongbin Zhang
MLIR/Buddy Compiler



Yahan Lu
JS Engine



Yang Liu
VM/BT



Shihua Liao
GCC/RISC-V



Jiacheng Zhou
OS

Project offerings

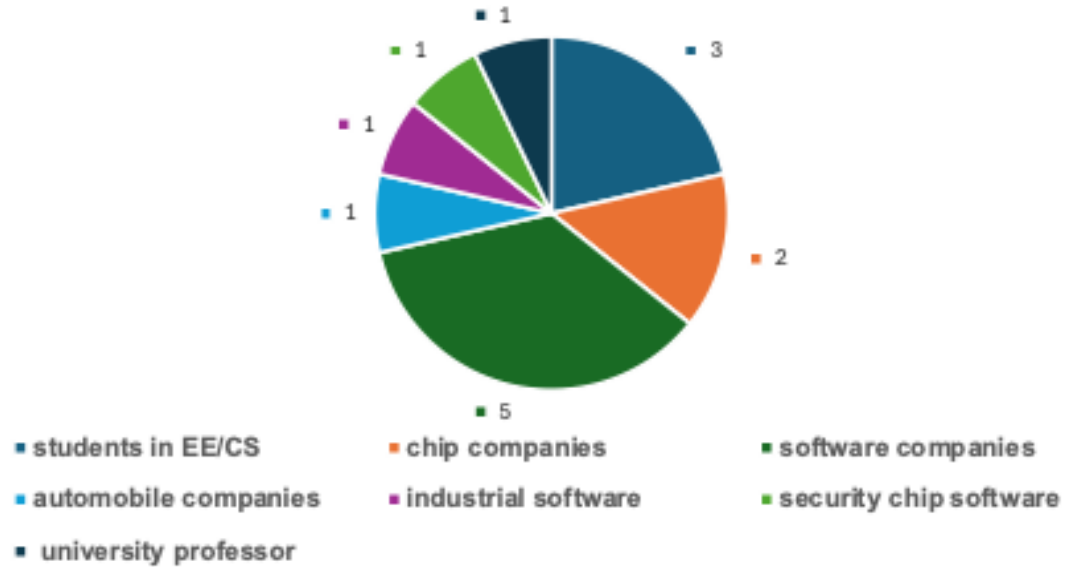
- 20+ compiler technology seminars
 - core components and basic compiler concepts



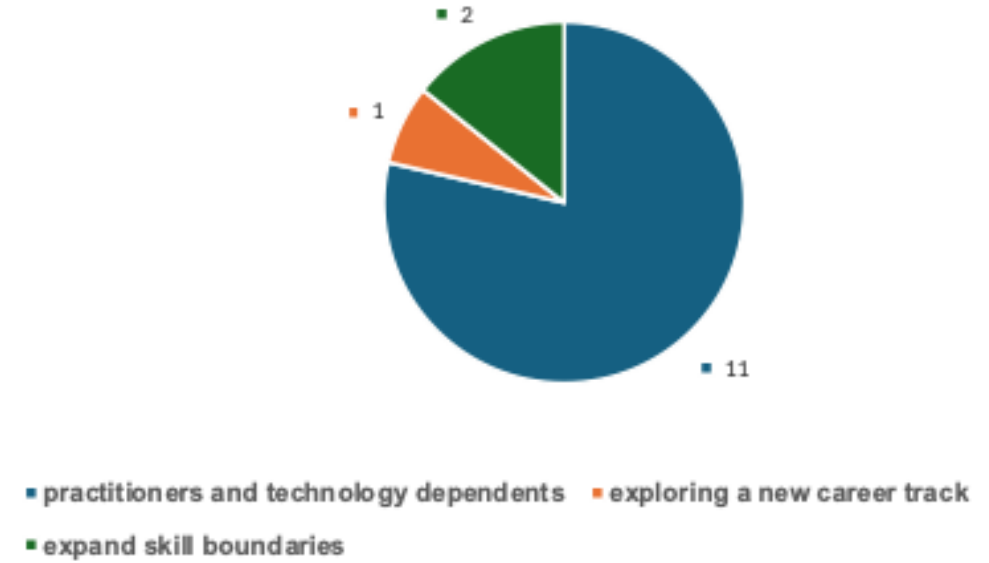
- tips for communication in open-source projects
- career planning

14 members joined

Participant Industry Distribution



Growth Goals Distribution



Achievements

- continuous course, discussion, and mentorship
- A successfully submitted her first PR to the BUDDY-MLIR repo, and it was merged. She entered the compiler technology industry after graduation
- B had multiple exchanges with her long-term mentor regarding LLVM's GPU backend. After completing her graduation project, she became a deep learning compiler engineer
- C completed the arch port of the GNU profile tool and unstreamed

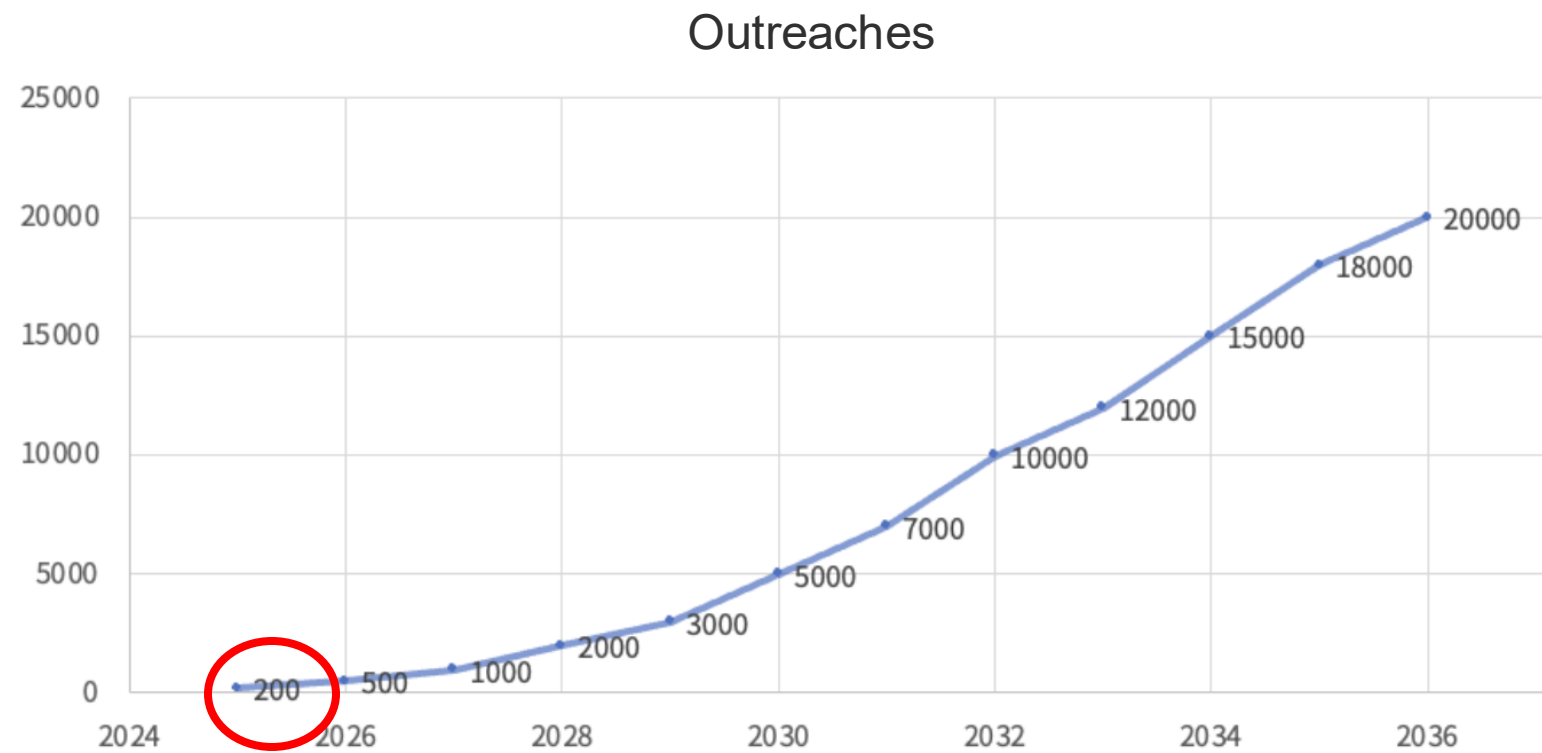
Achievements

- continuous course, discussion, and mentorship
- A successfully submitted her first PR to the BUDDY-MLIR repo, and it was merged.
She entered the compiler technology industry after graduation
- B had multiple exchanges with her long-term mentor regarding LLVM's GPU backend. After completing her graduation project, she became a deep learning compiler engineer
- C completed the arch port of the GNU profile tool and unstreamed

Achievements

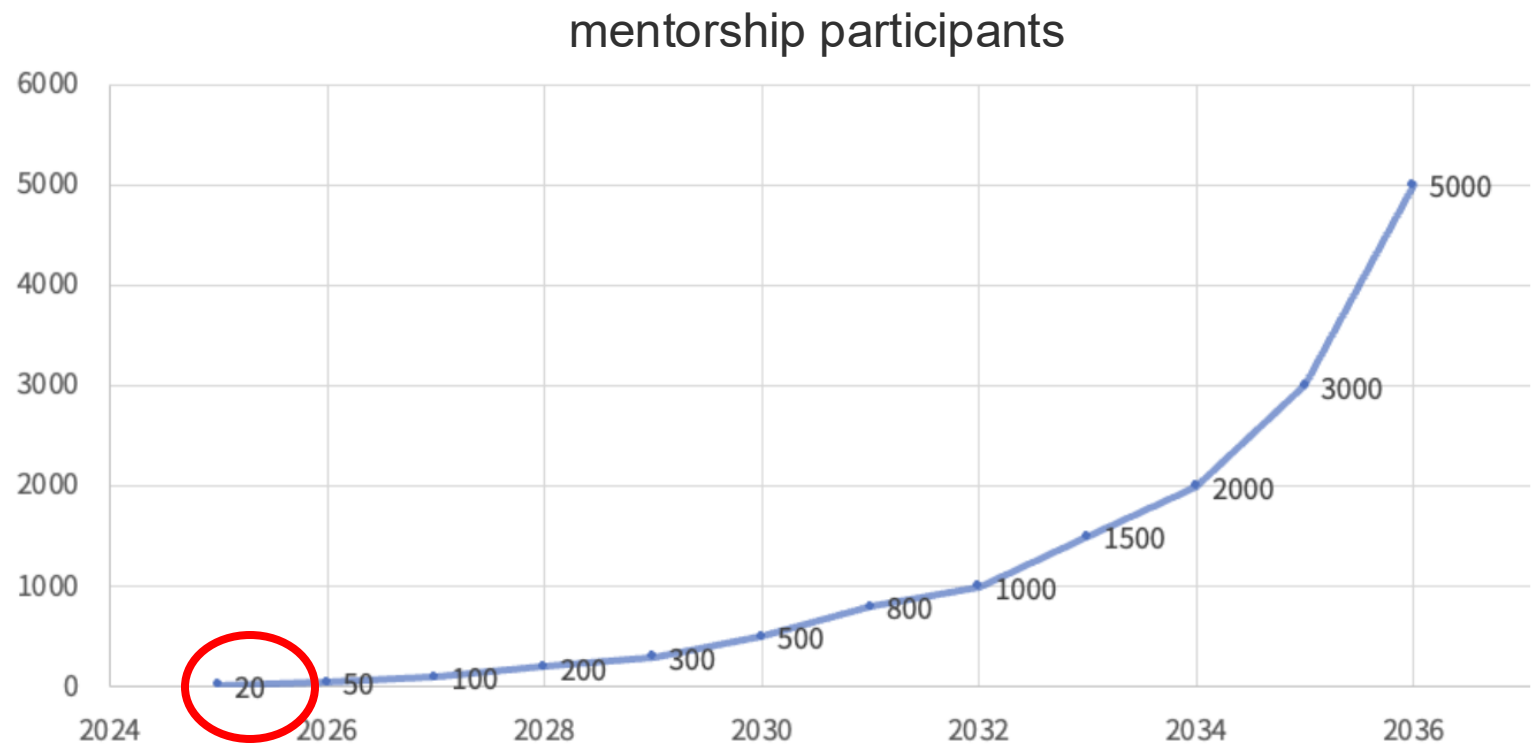
- continuous course, discussion, and mentorship
- A successfully submitted her first PR to the BUDDY-MLIR repo, and it was merged.
She entered the compiler technology industry after graduation
- B had multiple exchanges with her long-term mentor regarding LLVM's GPU backend. After completing her graduation project, she became a deep learning compiler engineer
- C completed the arch port of the GNU profile tool and unstreamed

Prospect from now to 2036- Outreaches



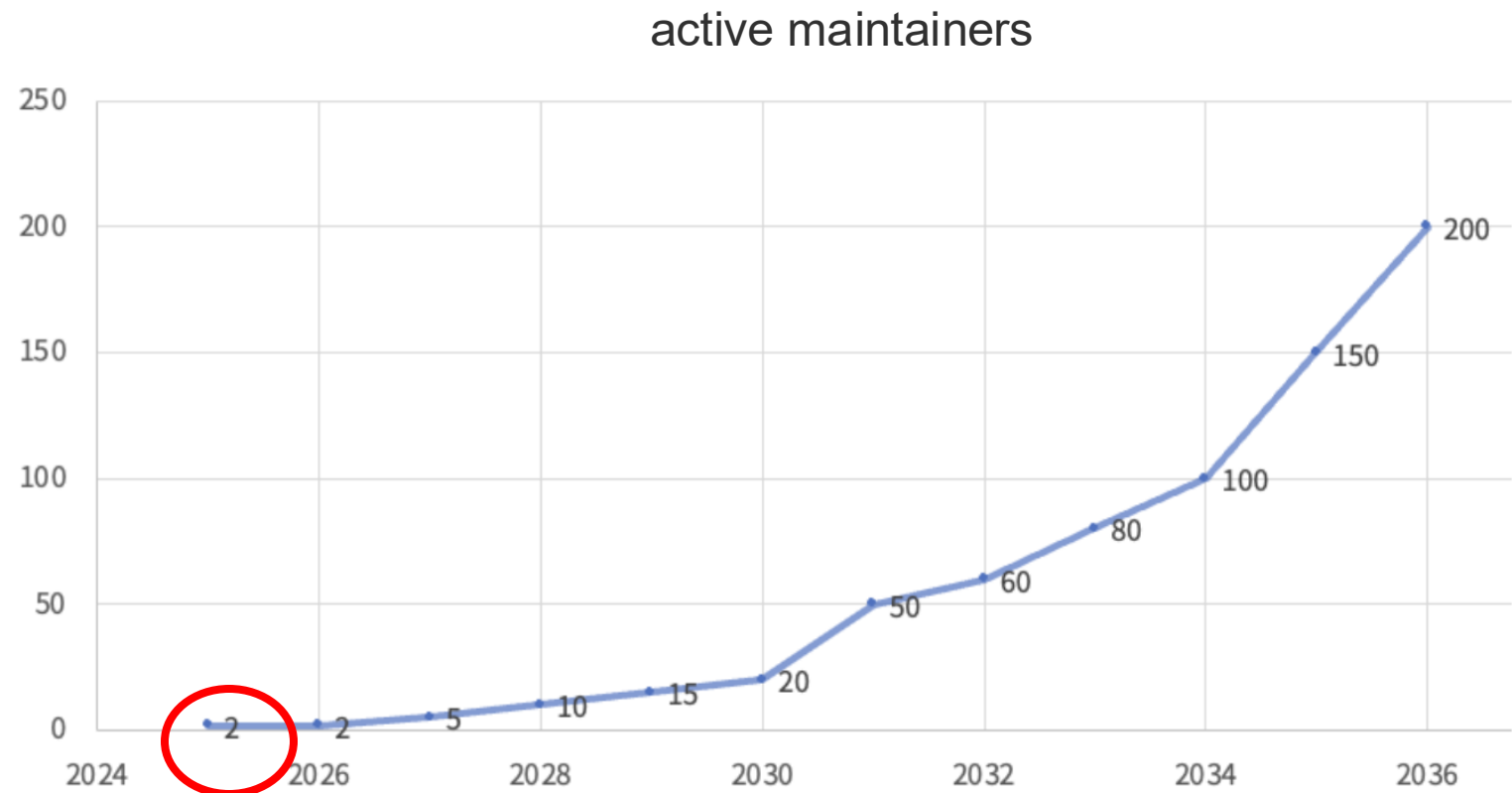
from 200 in 2025 to 20,000

Prospect from now to 2036-mentorship participants



from 20 to 5,000

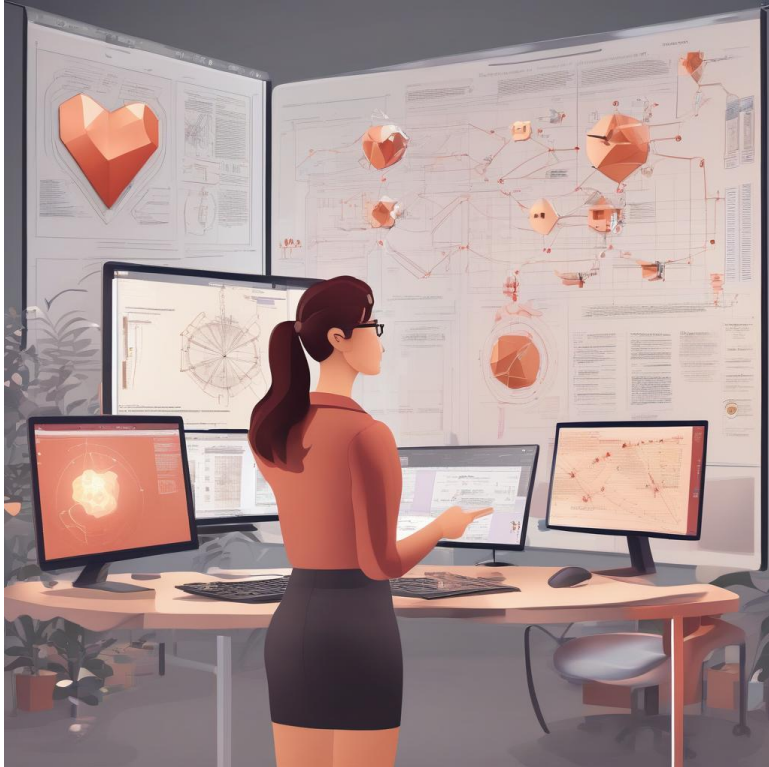
Prospect from now to 2036-active maintainers



from 2 to 200

Join together!

Taking Action for a Better Future



- connect to LLVM WiCT
- more local offline activities
- expand the outreach of the program
- welcoming everyone who supports and helps

Contact us:

lsqiuji@gmail.com

<https://github.com/hellollvm/nanpanjiang-project/>